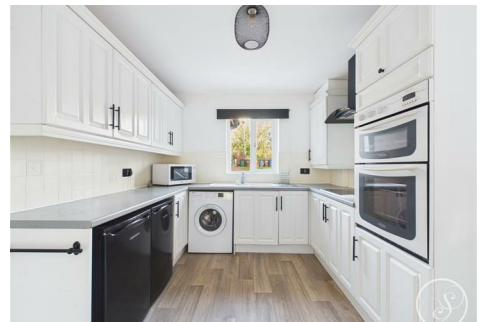




Stoneacre
Properties



Ouston Lane, Tadcaster, LS24 8DP
£1,000

Offered to let is this beautiful ground floor apartment that benefits from a gated entrance. This lovely property is located in a popular area with local amenities close by and easy access to Leeds and York City centres, with the nearby A64 and A1/M1 link roads providing swift and easy commuting throughout the region. Comprising: private entrance, lounge, kitchen/diner, two bedrooms and a shower room.

Externally there are communal gardens and parking. Early viewings are highly recommended.

ENTRANCE HALLWAY

LOUNGE



KITCHEN/DINER



BATHROOM



BEDROOM ONE



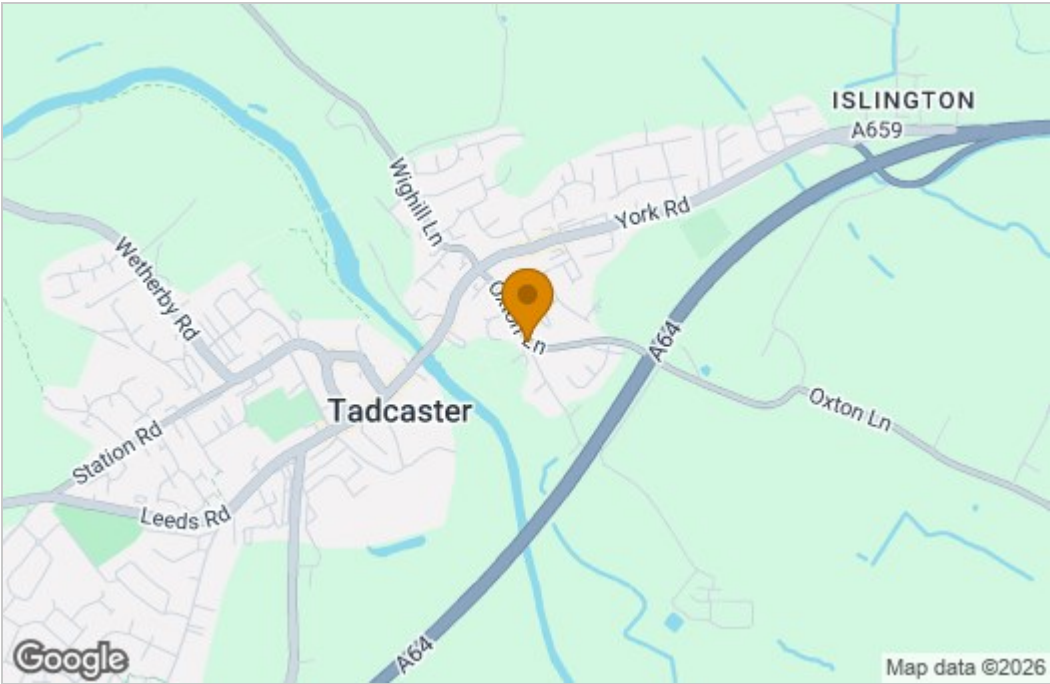
BEDROOM TWO



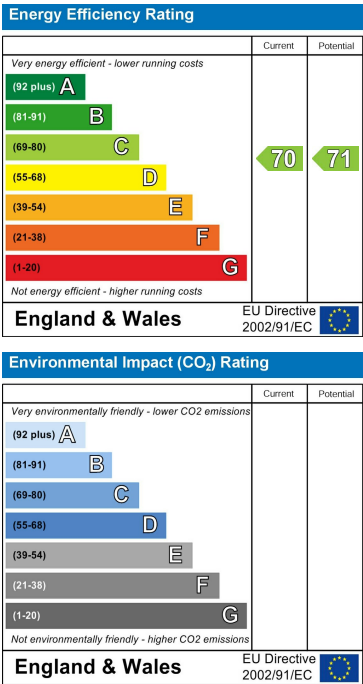
EXTERNAL

Floor Plan

Area Map



Energy Efficiency Graph



These particulars, whilst believed to be accurate are set out as a general outline only for guidance and do not constitute any part of an offer or contract. Intending purchasers should not rely on them as statements of representation of fact, but must satisfy themselves by inspection or otherwise as to their accuracy. No person in this firm's employment has the authority to make or give any representation or warranty in respect of the property.